

**Table 4: Tempering Valve and Nominal Pipe Diameters**  
Paragraphs 5.3.1 and 6.12.1

Low pressure (value vented or low pressure)	Low and medium pressure (value vented and open vented)	Main pressure
20 - 30	30 - 120	over 300
2 - 3	>3 - 12	over 30
25 mm	20 mm	15 mm
20 mm (see Note 3)	20 mm	20 mm (15 mm optional)
20 mm	20 mm (see Note 4)	20 mm (see Note 1)
20 mm	20 mm	20 mm (see Note 5)
20 mm	20 mm	15 mm (see Note 1)
15 mm	15 mm	15 mm
15 mm	15 mm	10 mm

- Notes:**
- If supplied by separate pipe from storage water heater to a single outlet.
  - This table is based on maximum pipe lengths of 20 metres.
  - 2 m maximum length from water heater outlet to tempering valve.
  - 15 mm if dedicated line to shower.
  - 10 mm if dedicated line to shower.
  - Table 3 pipe sizes have been calculated to deliver water simultaneously to the kitchen sink and one other fixture.

**PLUMBING SYSTEM AS 3500**

Fixture Type	Waste Size	Min. Grad.	Material
Ensuite WC	100mm	1:60	uPVC
Ensuite Vanity	65mm	1:40	uPVC
WC	100mm	1:40	uPVC
Bath Vanity	65mm	1:40	uPVC
Bath Shower	65mm	1:40	uPVC
Kitchen Sink	65mm	1:40	uPVC
Laundry	65mm	1:40	uPVC
TV	80mm	n/a	uPVC
Soil Stack	100mm	n/a	uPVC
FWG	65mm	1:40	uPVC
Main SW Line	100mm	1:60	uPVC

**NOTE:** all water pipes in garage or roof space to be insulated to comply with NZS4603

**RISK MATRIX**

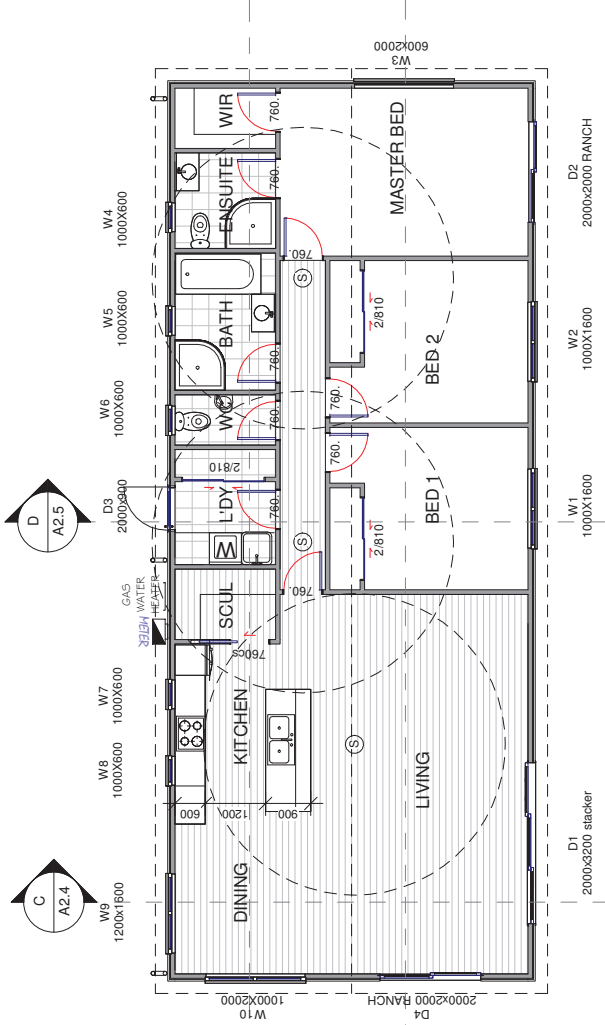
RISK ITEM	L	M	H	VH	SCORE
WIND ZONE				X	2
STOREYS	X				0
ROOF/WALL INTERSECTION		X			3
ENVELOPE COMPLEXITY	X				6
DECK DESIGN	X				0
TOTAL					7

**H1 Schedule Method (under 30% glazing)**

North Wall: 43.9m <sup>2</sup>	North: 14.2m <sup>2</sup> glazing		
East Wall: 17.9m <sup>2</sup>	East: 6.0m <sup>2</sup> glazing		
West Wall: 17.9m <sup>2</sup>	West: 1.2m <sup>2</sup> glazing		
South Wall: 43.9m <sup>2</sup>	South: 6.9m <sup>2</sup> glazing		
<b>Total Area of glazing: 28.6m<sup>2</sup></b>	<b>Total Area of glazing: 28.6m<sup>2</sup></b>		
	(Glazing less than 30% of wall area)		
As per Table 1 NZS4618:2009 Schedule method applies as north area of glazing is allowed to be above 30% as long as total glazing and east, south and west are below.			
ELEMENT	IR-VALUE	MIN REQ.	COMPLYING
ROOF	R3.3	R3.3	YES
WEATHER BOARD	R2.2	R2.0	YES
FLOOR	R3.0	R1.3	YES
GLAZING	R0.26	R0.26	YES

**FLOOR PLAN NOTES**

DDL Project # : 20-897	Drawn By : EJM
Issue Date : 26/11/24	Issue Type 1 : Comment
<b>A1.2</b>	<b>1 : 100@ A3</b>
<b>ORIGINAL IN COLOUR</b>	



**INTERIOR FINISHES**

- Walls - 10mm Gb boards (AQUALINE TO WET AREAS)
- Ceiling - 10mm Gb boards (AQUALINE TO WET AREAS)
- Skirting - 60x100 SB Pine
- Cornice - 60x100 Gb Cove
- Exterior joinery - FJ PP quality reveals with 60x10 architraves
- Interior Doors - MDF HC PQ with 60x10 architraves

**BATH FIXTURES**

- Shower - 1000x1000mm Acrylic
- Vanity - 1500mm Acrylic based
- Bidet - 1000x1000mm Acrylic
- Toilet - 1000x1000mm Acrylic
- Shower - 1000x1000mm Acrylic
- Vanity - 750mm

**LAUNDRY FIXTURES**

- Robbinhood ST3101 Laundry Sink

**NOTE: PLUMBING WASTE DESIGN COMPLETED AT TIME OF RELOCATION**

Material	Relevant Standard
Hot and Cold	
Copper	NZS 3501
Galvanised steel	NZS/GS 1387
Polybutylene	AS/NZS 2642: Parts 1, 2 and 3
Cold Only	
PVC-U	AS/NZS 1477
Polyethylene	NZS 7601 for pressures up to 0.9 MPa (Type 3)
	NZS 7602 for pressures up to 1.2 MPa (Type 5)
	AS/NZS 7610 for pressures up to 1.2 MPa
	AS/NZS 4129 for fittings
	AS/NZS 4130 for pressures up to 2.5 MPa

**LEGEND**

- (HWC) - 160L Electric hot water cylinder with tempering valve seismic fastening and overflow relief vent as specified by NZBC
- (S) - Approved Smoke Alarms

**FLOOR AREAS:**

Ground Floor Area Over Framing = 128m<sup>2</sup>

**GENERAL NOTES:**

- Stud Heights
- 2455mm-30x45mm Studs @400ctrs (Loadbearing)
- All dimensions are to framing
- All Soffits to be 300mm to wall framing unless noted otherwise
- All levels to be checked on site prior to commencing on job
- All dimensions to be verified during construction
- All doors to be installed with 10mm offset
- install Noggings for wall hung vanities
- All wet areas to be non slip vinyl flooring

**TIMBER TREATMENT:**

- H1 - External framing within envelope and subfloor framing (ext: Piles)
- H3.1 - Painted timber elements in contact with exterior elements
- H3.2 - Fence Pallets and rails not in ground
- H4 - Deck joists and bearers
- H4 - Fence Posts
- H5 - Posts/columns less than 150mm from ground
- H5 - Piles or structural post in contact with ground

**ADH - MILFORD - 128m<sup>2</sup> - 3 BRM - MONO**

**HOROTIU**

P: (07) 8498184 - E: admin@diversedesign.co.nz

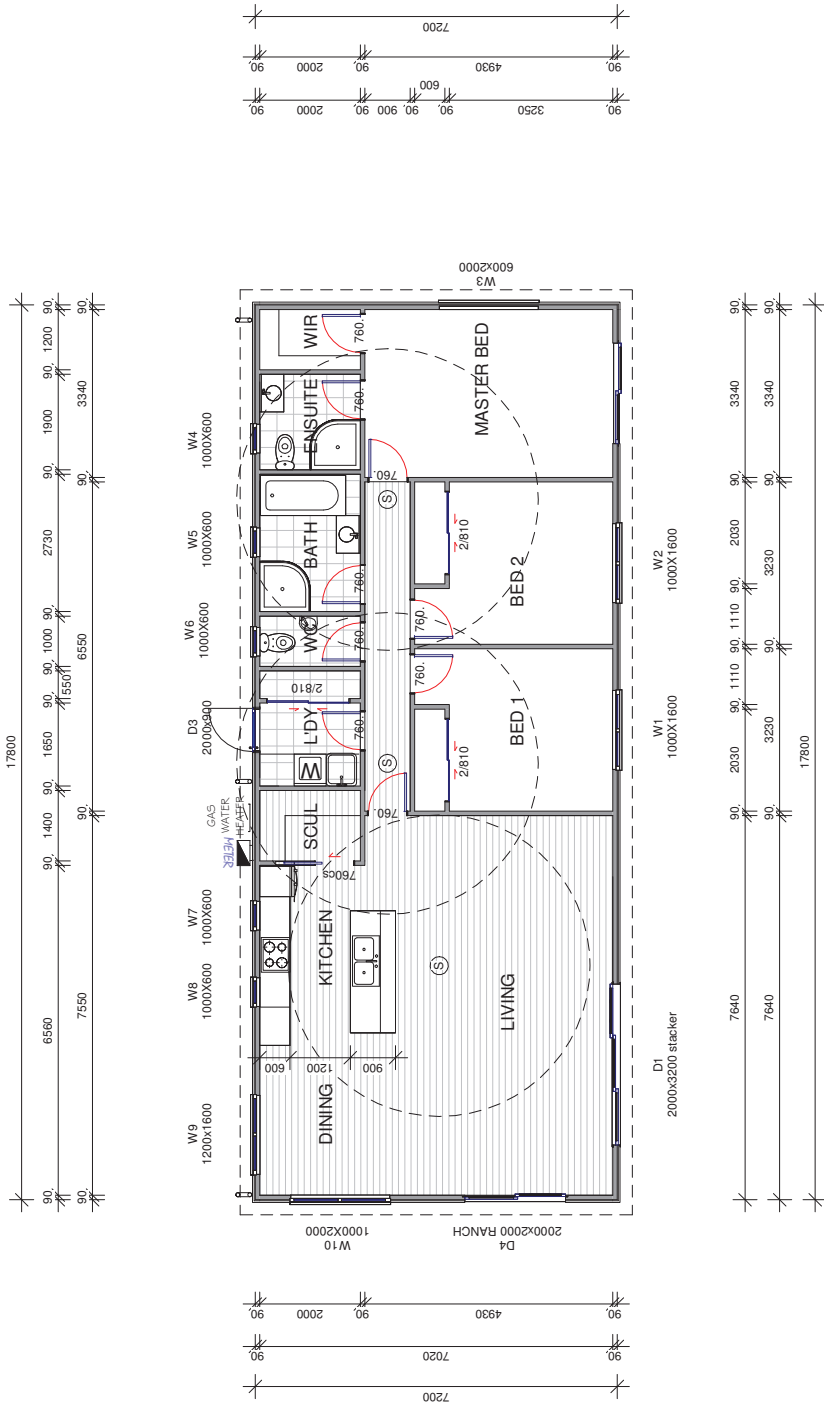
W: www.diversedesign.co.nz

The Copyright remains the Property of Diverse Design Ltd and should not be used without prior consent

**REVISIONS:**

NO.	DATE	DESCRIPTION

REVISIONS IN DETAIL



**FLOOR PLAN DIMENSIONS**

**1 : 100@ A3**

**ADH - MILFORD - 128m2 - 3 BRM - MONO**

**HOROTIU**

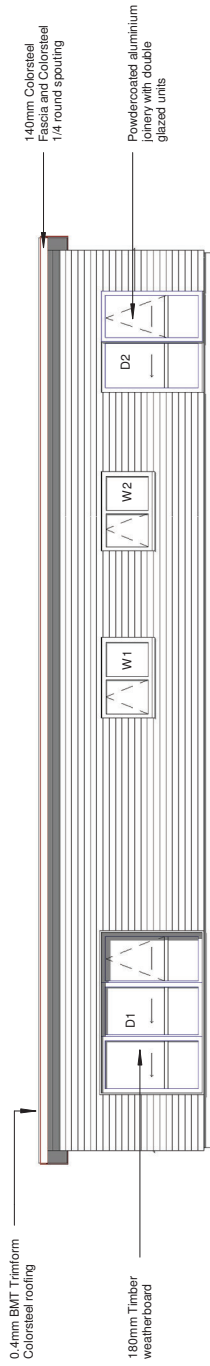
CONTRACTOR'S RESPONSIBILITY TO VERIFY DIMENSIONS ON SITE AND NOTIFY CONSULTANTS IN DETAIL.

DDL ARCHITECTURE  
 P: (07) 8498184 • E: admin@diversedesign.co.nz  
 W: www.diversedesign.co.nz  
 The Copyright remains the Property of Diverse Design Ltd and should not be used without prior consent.

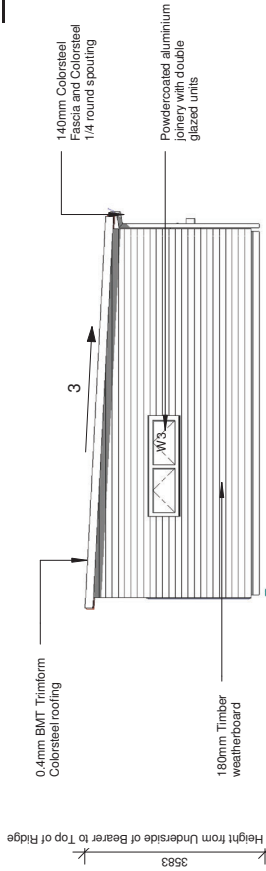
DDL Project # : 20-897
Drafted By : EJM
Issue Date : 26/11/24
Issue Type 1 : Comment
<b>ORIGINAL IN COLOUR</b>

NO.	DATE	DESCRIPTION

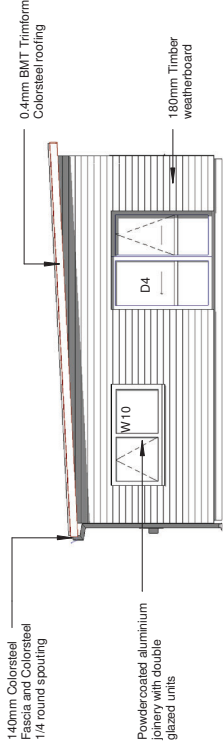
REVISIONS:



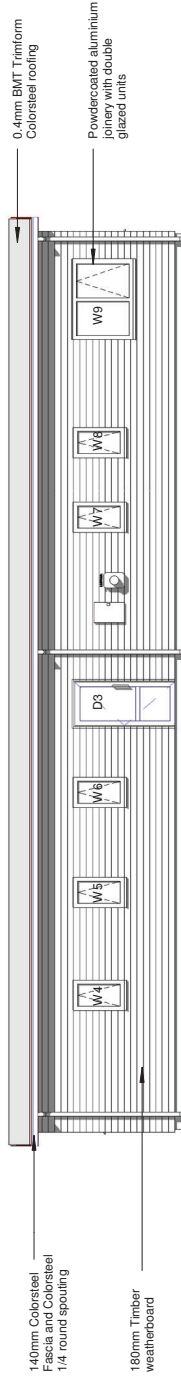
**ELEVATION 1**



**ELEVATION 2**



**ELEVATION 4**



**ELEVATION 3**

**Window Schedule**

Window #	Head	Height	Width	Glazing	Glass Type	Lintel Fixing type
W1	2000	1000	1600	Double	Clear	G
W2	2000	1000	1600	Double	Clear	G
W3	2000	600	2000	Double	Clear	F
W4	1975	1000	600	Double	Safety, opaque	F
W5	1975	1000	600	Double	Safety, opaque	F
W6	1975	1000	600	Double	Safety, opaque	F
W7	1975	1000	600	Double	Clear	F
W8	1975	1000	600	Double	Clear	F
W9	2000	1200	1600	Double	Clear	G
W10	2000	1000	2000	Double	Clear	G

**Door Schedule**

Door #	Head	Height	Width	Glazing	Glass Type	Comments	Lintel Fixing type
D1	2000	2000	3200	Double	Clear	Ranch Slider	H
D2	2000	2000	2000	Double	Clear	Ranch Slider	G
D3	2000	2000	900	Double	Clear	Laundry Door	F
D4	2000	2000	2000	Double	Clear	Ranch Slider	H

**FINISHED GROUND LEVELS (GENERAL)**  
 225mm FFL to Natural Ground  
 150mm FFL to Paved Area

DDL Project #	20-897
Drawn By	EJM
Issue Date	26/11/24
Issue Type	Comment
<b>ORIGINAL IN COLOUR</b>	

<b>ELEVATIONS</b>	<b>1 : 100@ A3</b>
<b>A2.1</b>	

REVISIONS:

NO.	DATE	DESCRIPTION

**ADH - MILFORD - 128m2 - 3 BRM - MONO**  
**HOROTIU**  
 CONTRACTOR'S RESPONSIBILITY TO VERIFY DIMENSIONS ON SITE AND NOTIFY CONSULTANTS OF ANY DISCREPANCIES IN DETAIL.